

Apartment Benalmadena

Benalmadena Costa

REF. 4681

€614,000



View on our website:

[OBJECT PHOTO](#)

[SEE ON THE MAP](#)

BEDROOMS / 3

BATHROOMS / 2

AREA / 174 m²

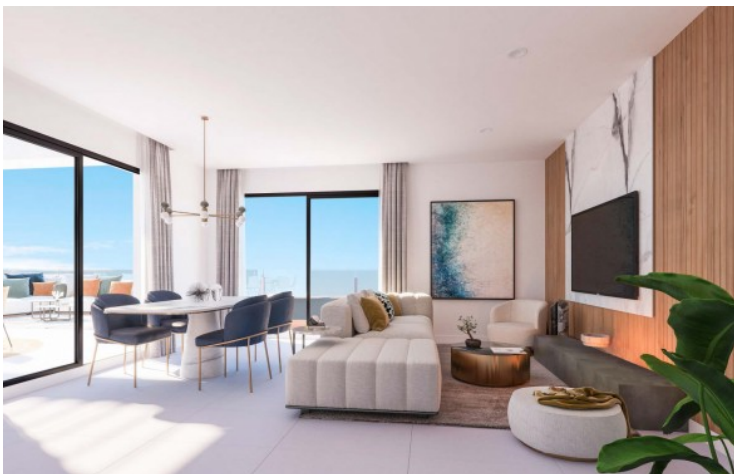
TERRACE / 75 m²

APARTMENT BENALMADENA

New Build Residences is an exclusive private urbanization located in a privileged place in Benalmádena. Due to its elevated location, each of its houses offers incredible views of the sea and the coast. The staggered arrangement facing the Mediterranean Sea of Mane Residences allows each and every one of the 49 homes and 2 townhouses to enjoy always bright rooms, thanks to natural light The Costa del Sol, with its great variety of landscapes from the sea to the mountains, has been for decades one of the favorite areas for visitors from all over the world for tourism or place of residence. Benalmádena is a cosmopolitan city that looks out over the sea from its Marina, an international benchmark for sailing and leisure, or from the shores of its 9 kilometers of coastline and its 17 beaches, its strategic location and communication with Málaga capital, make it a one of the most coveted locations on the Costa del Sol. Mâne Residences is located just 1 km from the Xanit Hospital in Benalmádena. Within a radius of 3 km you will find the Torrequebrada golf course, the international school, Selwo Marina, the public park of La Paloma and the old town. The Costa del Sol, with its great variety of landscapes from the sea to the mountains, has been for decades one of the favorite areas for visitors from all over the world for tourism or place of residence. Benalmádena is a cosmopolitan city that looks out over the sea from its Marina, an international benchmark for sailing and leisure, or from the shores of its 9 kilometers of coastline and its 17 beaches, its strategic location and communication with Málaga capital, make it a one of the most coveted locations on the Costa del Sol. Mâne Residences is located just 1 km from the Xanit Hospital in Benalmádena. Within a radius of 3 km you will find the Torrequebrada golf course, the international school, Selwo Marina, the public park of La Paloma and the old town. The inclination of the land allows you to enjoy stepped homes where their large terraces gain prominence with their glass railings that seem to merge directly with the sea in front and allow maximum use of the views and the spectacular sunlight. In the surroundings of the plot there is an excellent supply of all kinds of services, medical, educational, sports and commercial. Among them we highlight, Benalmadena Golf with its familiar and relaxed atmosphere, the Vithas Xanit International Hospital with its wide range of medical specialties, the Novaschool Benalmandena private school and the Municipal Sports Center of Benalmadena Pueblo. The promotion has convenient access to the A7 motorway, connection to the main arteries in the area and communication to the main public transport routes. The project is made up of 49 apartments and 2 townhouses with a unique location with great views. Mâne Residences offers cozy 2 and 3-bedroom homes with huge terraces, bright penthouses and townhouses with private gardens and terraces. In the common areas we find the community pool, an equipped gym as well as a social area for leisure meetings

View on our website:







WELCOME TO INMOLUX - REAL ESTATE AGENCY IN SPAIN

WHERE DREAMS
COME TRUE

inmoluxgroup.com